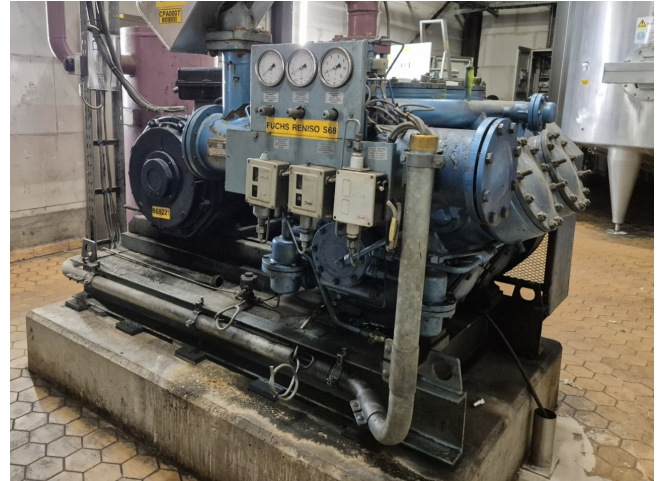


# Grasso RC 611

## Specifications

|   |                |
|---|----------------|
| Marka                                   | Grasso         |
| Typ                                     | RC 611         |
| Czynnik chłodzący                       | NH 3 (ammonia) |
| kW at +10°C/+40°C                       | 990,0*         |
| kW at 0°C/+40°C                         | 662,8*         |
| kW at -5°C/+40°C                        | 532,1*         |
| kW at -10°C/+40°C                       | 418,5*         |
| Rozładunek                              | ✓              |
| Kontrolka wydajności                    | ✓              |
| Podstawa na stalowej ramie              | ✓              |
| Ciśnieniowe przełączniki bezpieczeństwa | ✓              |
| Wskaźniki ciśnienia                     | ✓              |
| Separator oleju                         | ✓              |
| Okno widokowe                           | ✓              |
| m <sup>3</sup> / h                      | 798,0          |
| Stock                                   | 1              |



## Description

### Used Grasso RC 611

Used Grasso RC 611 reciprocating compressor on NH3 (R717). Complete with a Schorch KN7280S-BB015-Z electric motor - 50 Hz - 110 kW - 1475 RPM, Grasso OS6 oil separator, pressure and safety switches/gauges. The compressor has a displacement of 798 m<sup>3</sup>/h.

\*Why choose for HOSBV? We are not only the largest used refrigeration specialist in Europe, but also, we deliver all equipment including an extensive test, warranty and an industrial cleaning. \*Optionally we can also perform a new paint job and arrange the logistics.

